

April 16, 2026

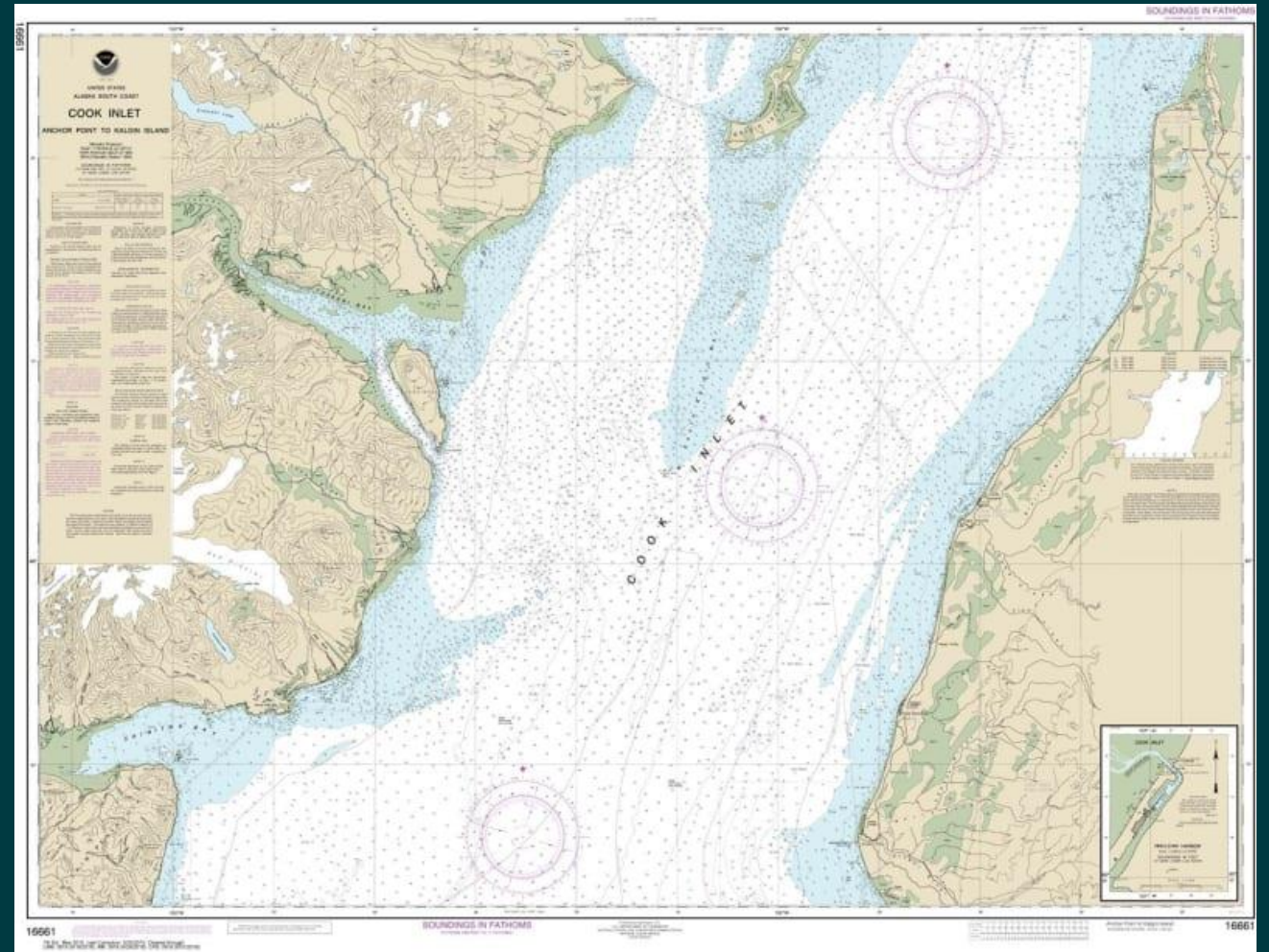
Quarterly Meeting

CIHSC:  
NAVIGATION  
WORKGROUP

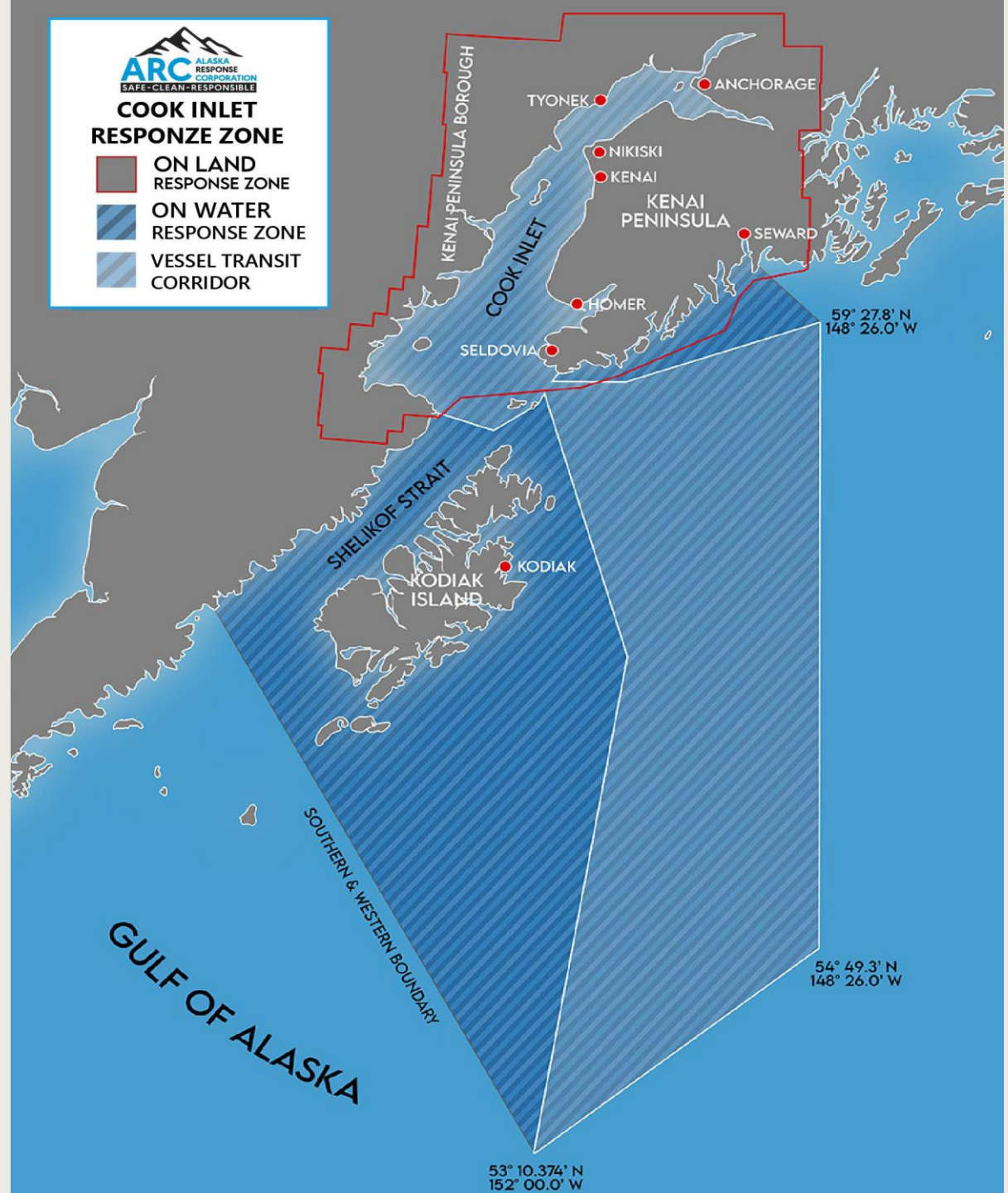


# OLD BUSINESS

- ARC Zones
- Loitering



WHY ARE COOK INLET  
BOUND VESSELS  
ADVISED TO ENTER THE  
ARC ZONE BETWEEN  
TWO SOUTHERN MOST  
POINTS?



# Review and re-familiarize 2007 DEC and CIRCAC's Cook Inlet Potential Places of Refuge (PPOR)

Project was to identify docking, anchoring, mooring, and grounding locations that may be selected as Potential Places of Refuge in order to enhance the overall response process.

# NEW BUSINESS

