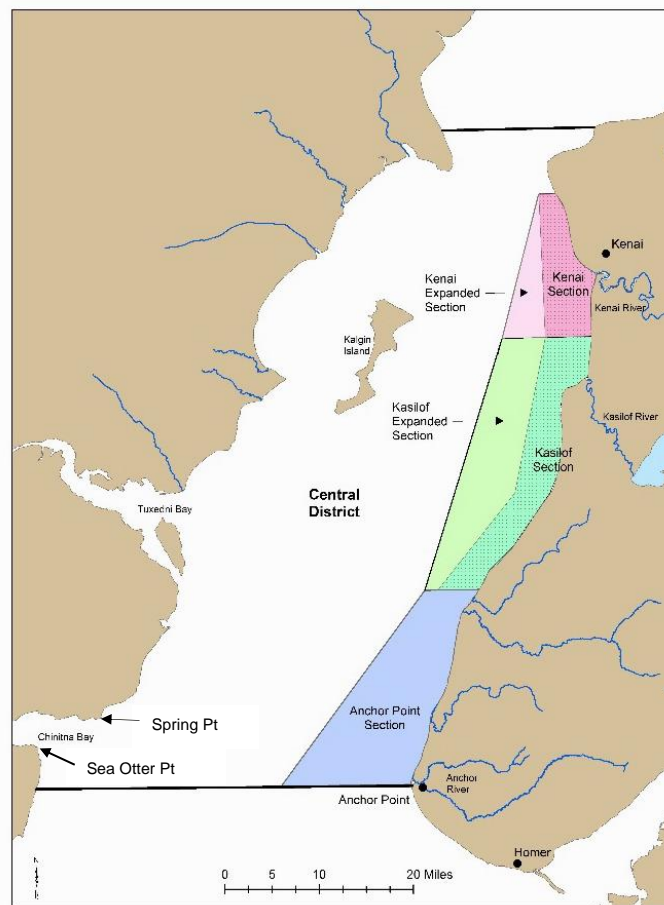


	<u>Latitude</u>	<u>Longitude</u>
N Boundary – Boulder Pt	60°46.39'	
NW Kenai Section	60°40.35'	151°26.33'
SW Reg Kenai Section	60°27.10'	151°25.70'
SW Exp Kenai Section	60°27.10'	151°33.76'
Midpoint Reg Kasilof Section	60°12.75'	151°32.05'
SW Kasilof Section	60°04.02'	151°46.60'
Shell C Platform (approx.)	60°45.60'	151°30.40'
West Foreland (approx.)	60°42.75'	151°43.00'
East Foreland	60°43.20'	151°24.30'
Drift River Terminal	60°33.25'	152°08.00'
Harriet Point	60°23.70'	152°14.40'
Kalgin Buoy	60°04.70'	152°09.90'
NW AP/SW Exp Kasilof Section	60°04.02'	151°49.00'
SW Anchor Point Section	59°46.15'	152°15.80'
S Boundary – Anchor Pt Light	59°46.15'	151°52.06'

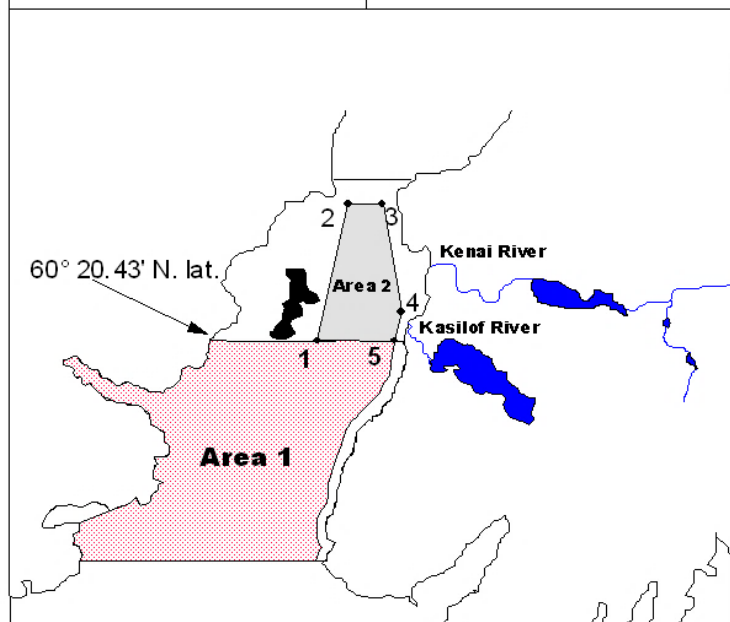
**UCIDA presents the accompanying graphics as a convenience to drift fishermen. UCIDA accepts no liability for any actions where an individual makes a judgment based upon information provided by these graphics and coordinates.**



*Cook Inlet, Alaska 2023*

**Drift Gillnet Area 1 & Area 2 Descriptions**

<b>AREA 2 DESCRIPTION</b>	<b>COORDINATES</b>
1. Southwest Corner	60° 20.43' N. lat., 151° 54.83' W. long.
2. Northwest Corner	60° 41.08' N. lat., 151° 39.00' W. long.
3. Northeast Corner	60° 41.08' N. lat., 151° 24.00' W. long.
4. Blanchard Line Corridor Boundary	60° 27.10' N. lat., 151° 25.70' W. long.
5. Southeast Corner	60° 20.43' N. lat., 151° 28.55' W. long.



**Drift Gillnet Areas 3 & Area 4**

<b>AREA 4 LOCATION</b>	<b>COORDINATES</b>
A. SW Corner	A. 59° 46.15' N 153° 00.20' W
B. NW Corner	B. 60° 04.70' N 152° 34.74' W
C. NE Corner (Kalgin Buoy)	C. 60° 04.70' N 152° 09.90' W
D. SE Corner	D. 59° 46.15' N 152° 18.62' W

**Area 3 – West Side**  
 Those waters within one mile of mean lower low water (zero tide) south of a point on the West Foreland at 60° 42.70', 151° 42.30'

