

The Future of NOAA Charts

Overview

In November of 2019, NOAA announced the beginning of a transition away from the production of traditional numbered paper charts to focus on one primary charting product - electronic navigational charts (NOAA ENC®). Cancellation of individual numbered charts started in 2021 and will be complete across the country by January 2025.

As part of this transition, NOAA is also standardizing the scales and footprints of charts. This will provide consistency between regions, and ensure all areas are represented at a scale appropriate to a region's use.



NOAA Custom Charts

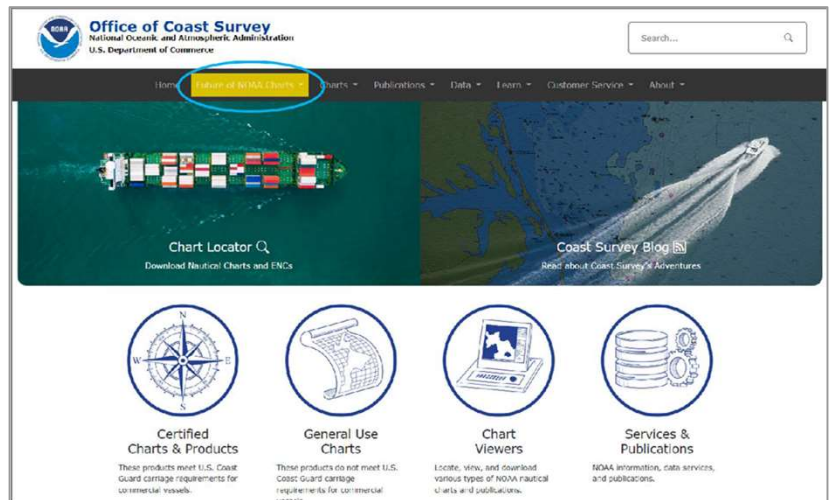
The NOAA Custom Chart (NCC) web app enables users to create their own customized nautical charts directly from the latest official NOAA electronic navigational chart (NOAA ENC®) data. A user selects a region of interest, scale, and paper size to create a printable PDF chart which uses symbology similar to that on traditional paper charts.

How to View NOAA Charts

NOAA ENC®s are created in line with the International Maritime Organization's (IMO) charting standards for use with Electronic Chart Display and Information Systems (ECDIS). Most standard electronic marine navigation systems also load and work with NOAA ENC®s.

For more information, go to NOAA's Office of Coast Survey homepage:

<https://nauticalcharts.noaa.gov/>



Farewell to Traditional Nautical Charts

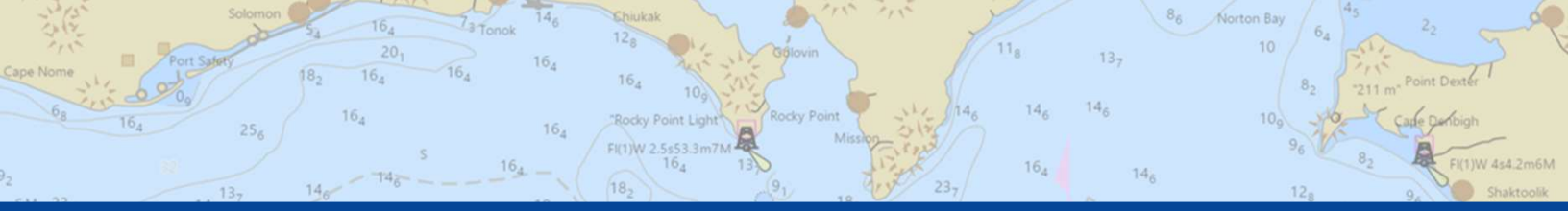
Six months before a chart is canceled, NOAA will update the chart with a note stating the chart's status as a "last edition" and the date on which it will be canceled. An announcement will also appear in the U.S. Coast Guard Local Notice to Mariners (LNM) for the region.

*Currently, **only critical updates published in the LNM** are being applied to remaining traditional raster / paper charts. Many of these corrections relate to changes with aids to navigation, but they may include information about other items such as rocks, wrecks, and other obstructions or dangers. **Once a paper chart has been cancelled, no further updates will be made.***



Chart Viewers





Additional Information:

To read more about the cancellation process:

<https://nauticalcharts.noaa.gov/charts/farewell-to-traditional-nautical-charts.html>

To see which charts have been canceled : <https://charts.noaa.gov/MCD/DoleCanceledByChart.shtml>

Charts within 6 months of their cancelation date are marked as "LAST EDITION" and considered 'Pending'

To create a paper chart product to augment the use of the ENC,
check out the **NOAA Custom Chart (NCC)** tool:

<https://devgis.charttools.noaa.gov/pod/>

The NCC is an online application that enables users to create their own customized nautical charts directly from the latest official NOAA electronic navigational chart (NOAA ENC®) data.

These NCCs can be printed by several of our **Certified Chart Agents**.

Those who have indicated they have this capacity are listed here:

<https://nauticalcharts.noaa.gov/publications/print-agents.html#ncc>

To see what updates have occurred in a specific area,
check out the **Weekly Chart Updates** site for geographical changes.

https://distribution.charts.noaa.gov/weekly_updates/

Select "ENC" or "Chart" in the search bar and begin typing the appropriate number to choose from a drop down list and zoom directly to an area. You can also manually zoom to your area of interest using your mouse wheel, selecting the plus or minus buttons in the upper left, or clicking and dragging the mouse to pan. Even if the raster chart has already been canceled in your area of interest, changes to that area will be shown via the "ENC" option. You are also able to click through week by week to see changes from different time periods.

This site is being revamped and will be updated in the future.

All NOAA historical paper charts, including Last Editions continue to be found here:

NOTE: although the last cancelled edition of a traditional chart can be obtained here in jpeg or pdf format, these products are not intended to be used for navigation once cancelled since additional critical changes may have occurred since their cancellation date.

<https://historicalcharts.noaa.gov/>

* * *

The U.S. Coast Guard has asked NOAA to direct the public to send all questions and comments regarding nautical chart carriage requirements to the USCG Navigation Center at:

<https://www.navcen.uscg.gov/contact/contact-us>

